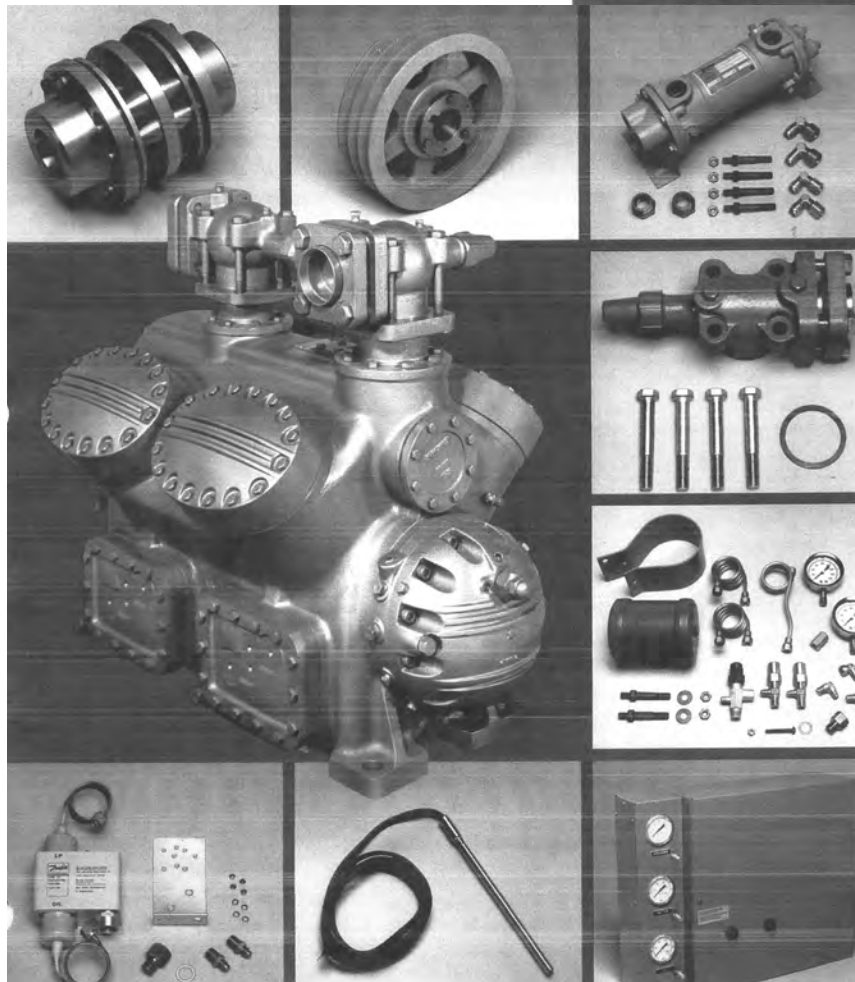
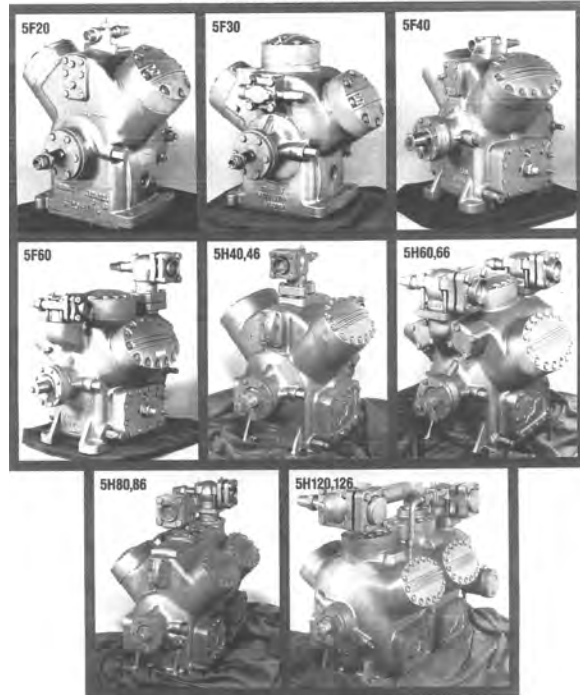




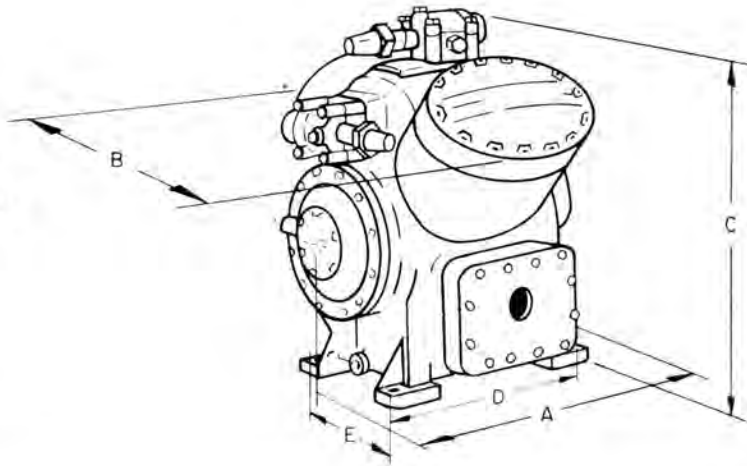
Carlyle Compressors

Carlyle builds the most reliable compressors. The 5F/H open-drive compressors are workhorses when it comes to industrial processes, low temperature food storage and many other industrial applications. These competitively priced compressors are field repairable, and are compatible with the modern refrigerants used today including R-22, R-134a, R-404A and R-507. The flexibility of the 5F/H permits a choice of motors, either belt or direct drive, to match refrigerant and job requirements. Automatic unloaded starting makes the use of expensive high torque motors unnecessary. Part-load operation capability increases energy efficiency and lowers utility bills.





COMPRESSORS



APPLICATION DATA

MODEL NO.	NOMINAL HORSEPOWER			NO. OF CYL.	BORE (IN.)	STROKE (IN.)	CFM @ 1750 RPM	RATINGS IN TONS*			MIN. SPEED FOR UNLOADER OPERATION	OIL CHG. (PINTS)	SUCT. LINE ODF (IN.)	DISCH. LINE ODF (IN.)	COMP. WT. (LB.)
	R-12	R-22	R-502					R-12	R-22	R-502					
5F20	5	10	10	2	2 1/2	2	19.8	5.18	8.46	8.85	600	5	1 1/8	7/8	175
5F30	7 1/2	15	15	3	2 1/2	2	29.8	7.76	12.7	13.2	700	5 1/2	1 5/8	1 3/8	215
5F40	10	20	20	4	2 1/2	2	39.8	10.5	16.8	17.7	800	12	1 5/8	1 3/8	355
5F60	15	25	25	6	2 1/2	2	59.6	15.7	25.3	26.5	900	13	2 1/8	1 5/8	400
5H40	25	40	40	4	3 1/4	2 3/4	92.4	24.7	39.6	40.5	800	18	2 5/8	2 1/8	610
5H46	40	60	60	4	3 1/4	3 7/16	115.5	30.6	49.1	50.2	800	18	2 5/8	2 1/8	610
5H60	40	60	60	6	3 1/4	2 3/4	138.4	37.0	59.4	60.9	900	21	3 1/8	3 1/8	795
5H66	50	75	75	6	3 1/4	3 7/16	173.0	45.9	73.8	75.4	900	21	3 1/8	3 1/8	795
5H80	50	75	75	8	3 1/4	2 3/4	184.7	49.4	79.2	81.2	1100	41	3 1/8	3 1/8	1115
5H86	75	100	100	8	3 1/4	3 7/16	231.0	61.1	98.2	100.7	1100	41	3 1/8	3 1/8	1115
5H120	75	125	125	12	3 1/4	2 3/4	276.0	74.0	119.0	122.0	900	61	4 1/8	4 1/8	1580
5H126	100	150	150	12	3 1/4	3 7/16	346.0	91.8	145.0	151.2	900	61	4 1/8	4 1/8	1580

NOTE: For Typical Compressor to Drive Motor Combinations see page 11.

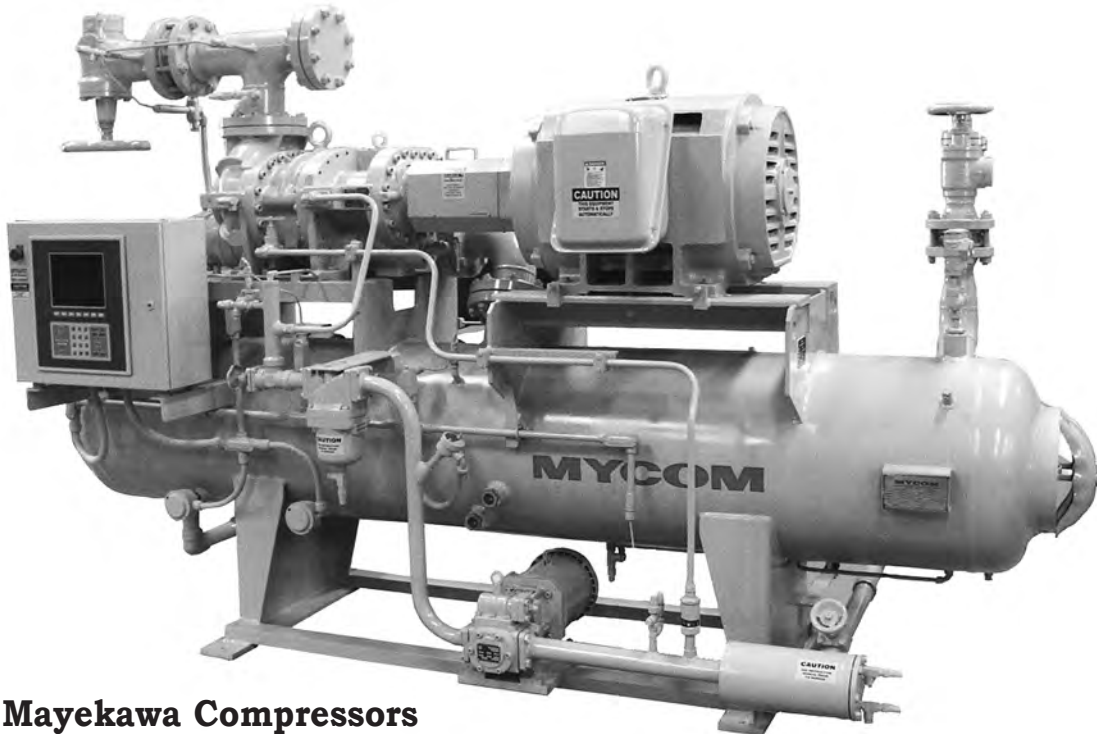
NOTES:

- * 40°F saturated suction, 105°F saturated discharge, 15°F superheat, 0°F subcooling
- 45 PSIG net oil pressure (oil pressure PSIG — suction pressure PSIG)
- ODF = Outside Diameter Female (in.)
- Maximum RPM = 1750
- Minimum RPM for lubrication = 400 RPM

COMPRESSOR DIMENSIONS

COMPRESSOR		5F				5H				5H			
		20	30	40	60	40	60	80	120	46	66	86	126
DIMENSIONS (in.)	A	15 7/8	18	21 1/2	23 1/2	30 1/2	31 1/2	43 7/8	47	30 1/2	31 1/2	43 7/8	47
	B	18 3/4	20 7/8	19	21	24 1/2	27 1/4	24 1/2	27 3/8	24 1/2	27 1/4	24 1/2	27 3/8
	C	18 3/4	18	20 1/8	24 1/2	29	29 7/8	32	34 7/8	29	29 7/8	32	34 7/8
Between Mgt. hole ⌀	D	5 3/4	5 3/4	12	13 7/16	15 1/2	17	29	29	15 1/2	17	29	29
	E	10	10	8	8	11	11	11	11	11	11	11	11





Mayekawa Compressors

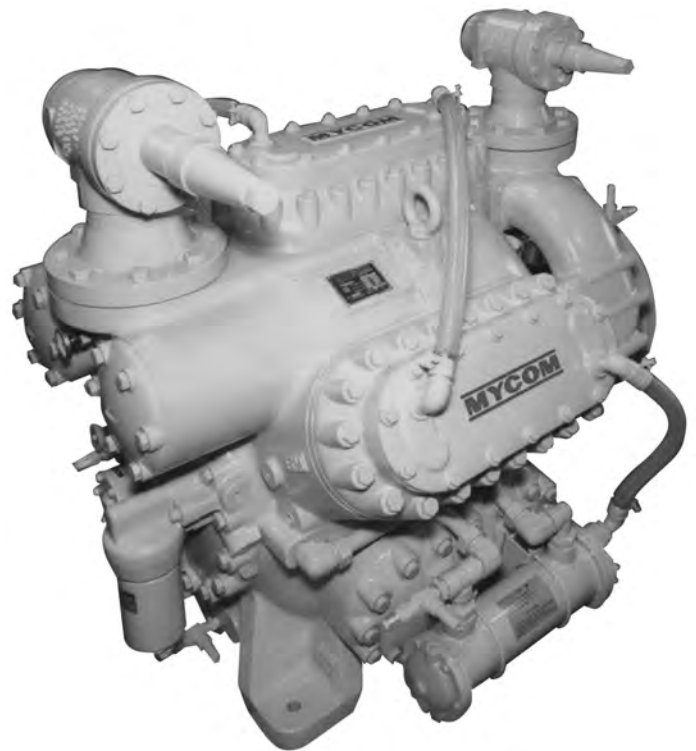
A revolution in efficiency. With the power of Mayekawa's research and development department, the M-Series was created to combat current soaring energy costs with the ability to reduce Kw consumption, while still providing the Tonnage required. The M-Series will definitely prove to be the most efficient reciprocating compressor in the global market place.

With efficiencies up to 20% better than reciprocating compressors that are available in marketplace and up to 30% better than mini screw compressors, the M-Series has the power to reduce bottom line operating costs.

Increase the performance of your refrigeration facility by capturing the heat of compression generated by the M-Series compressor (greater than that of a screw compressor) to substantially improve the energy efficiency of any refrigeration system.

STANDARD FEATURES

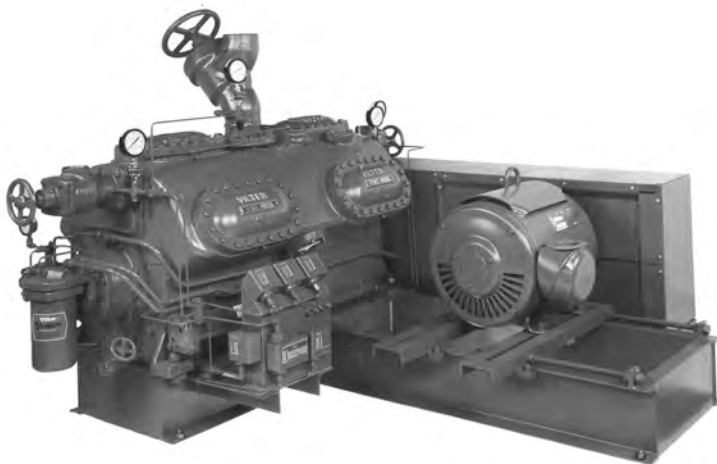
- Greater efficiency with a screw capacity range
- Less BHP per ton
- Compact in design
- Precision design effortless overhaul
- 50% - 60% increase in run times between overhauls





COMPRESSORS

Copeland Small HP Compressors



Vilter VMC Reciprocating Compressors

With a history that dates more than 130 years, Vilter is the name to rely on for dependable, high-performance refrigeration. Vilter products include a complete line of compressors, heat exchangers and related equipment to solve any refrigeration need. Vilter equipment is used throughout the world.

